

Urban field tests (done by third party with a survey grade GPS + GLONASS Receiver).

Blue - low cost GPS + GLONASS magnet mount antenna

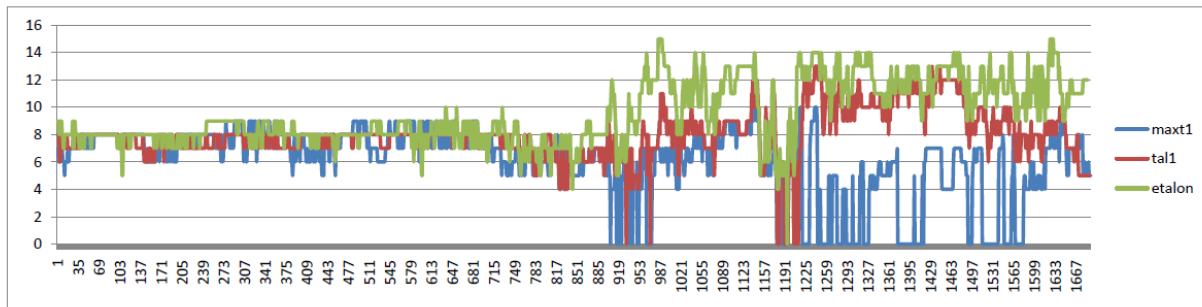
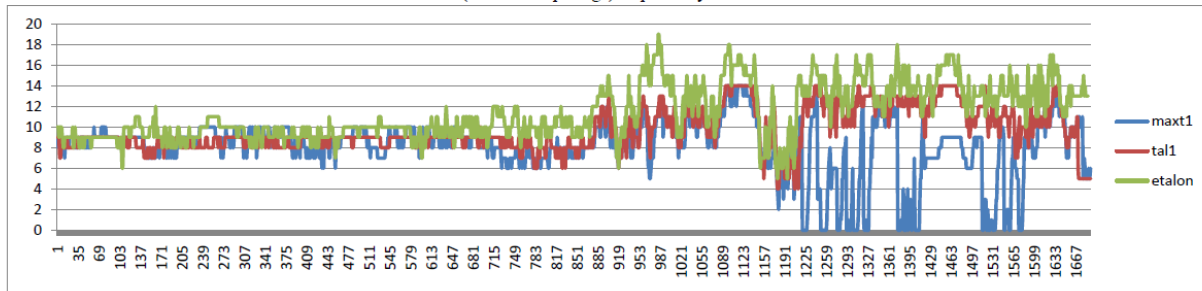
Red – Tallysman’s TW2400 GPS + GLONASS antenna

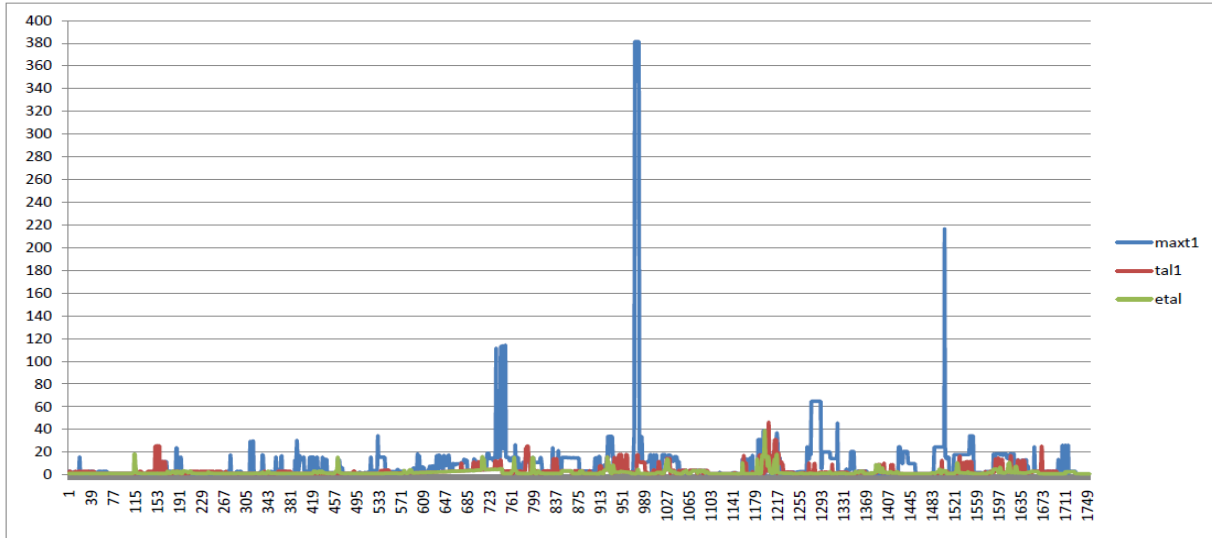
Green - High-end Survey Grade GPS + GLONASS antenna

Page 1 – Number of satellite tracked in an urban canyon environment (2 passes).

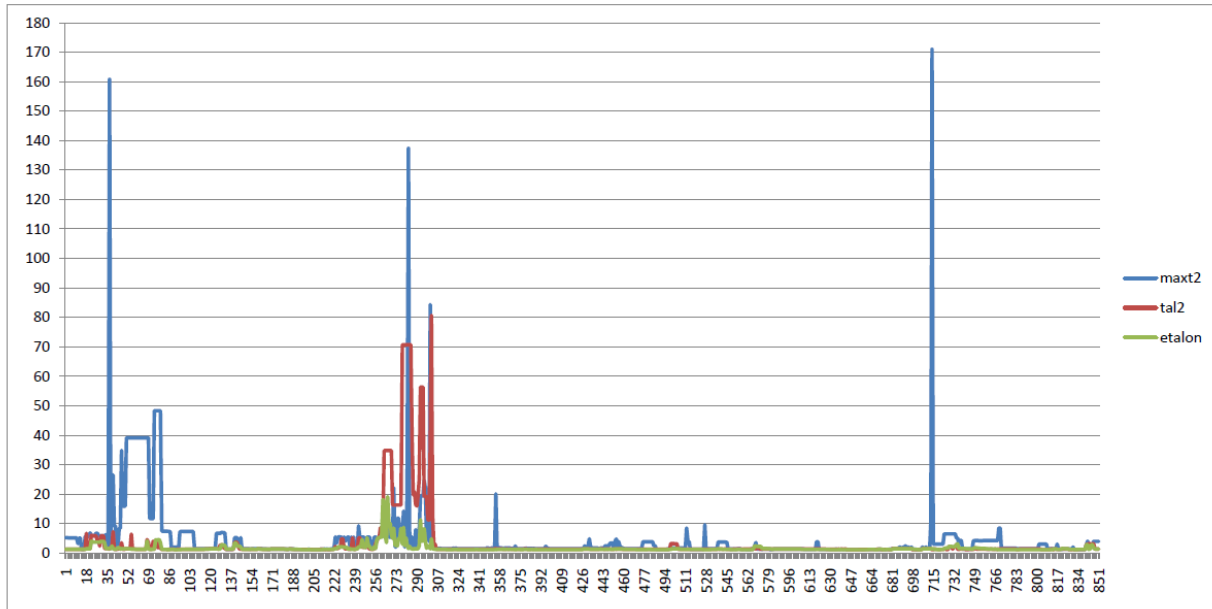
TEST RESULTS

Plots with the number of satellites tracked and used in solution (for the first passage) respectively.





Picture 1 Passage 1



Picture 2 Passage 2